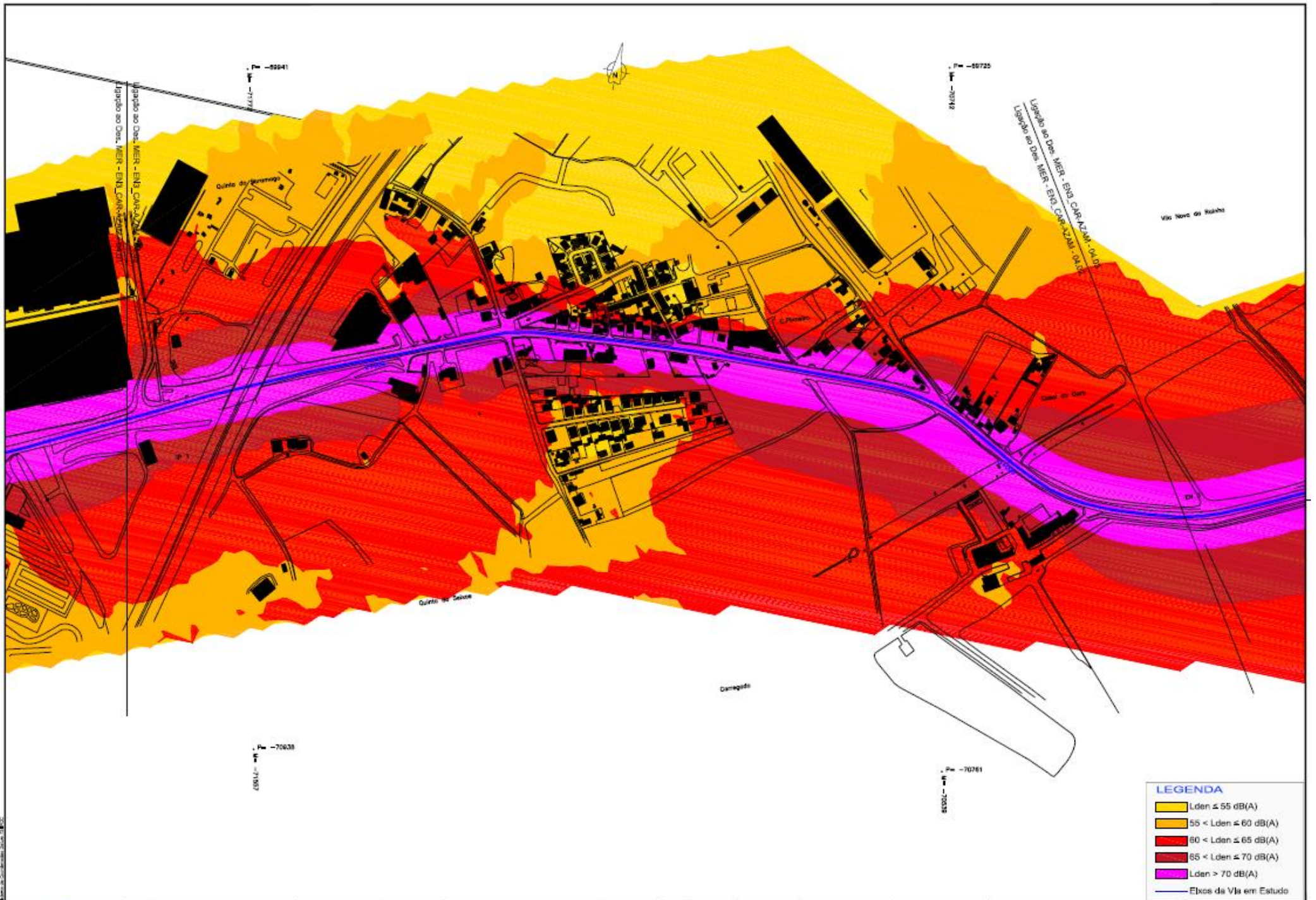


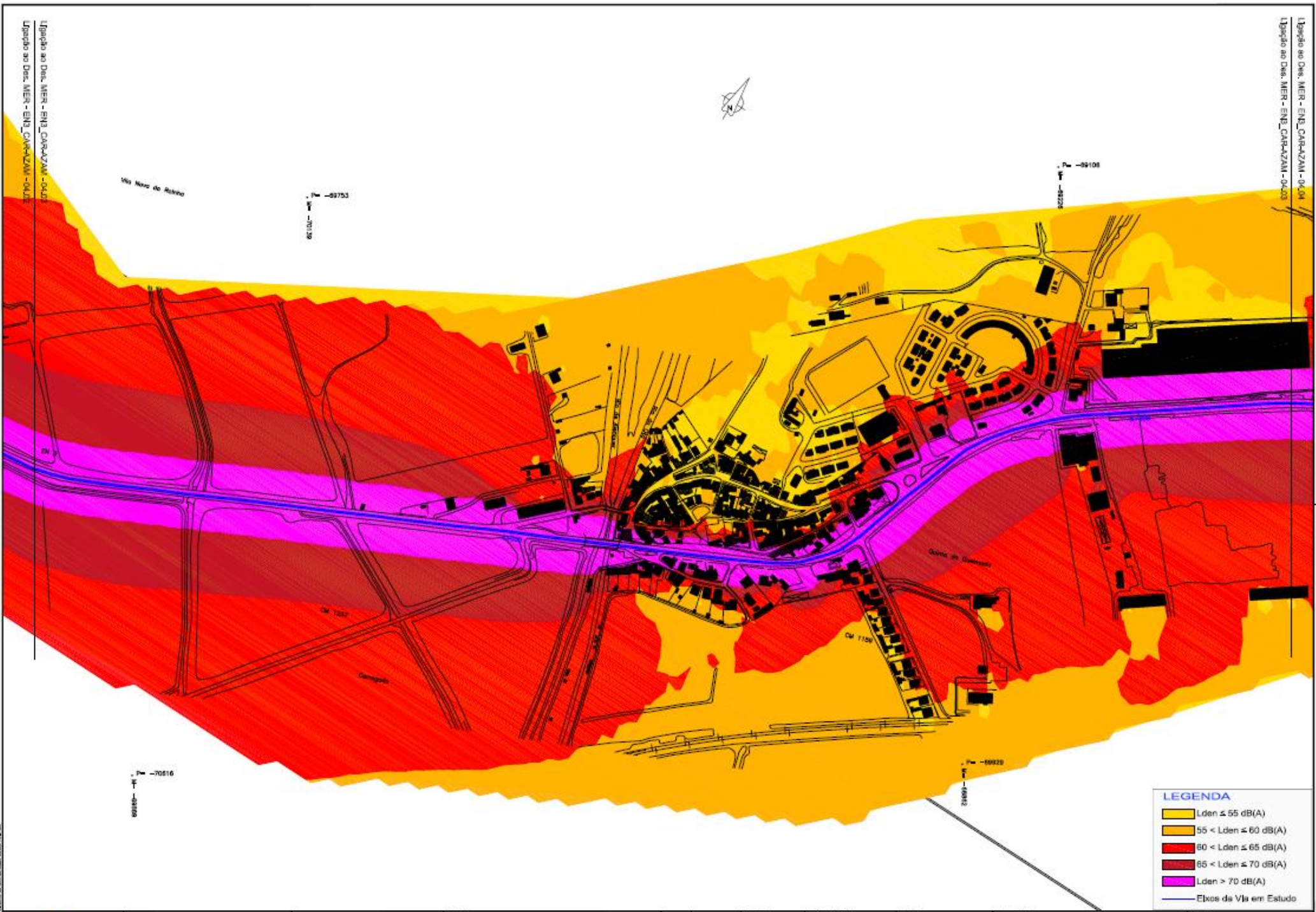
**LEGENDA**

- Lden ≤ 55 dB(A)
- 55 < Lden ≤ 60 dB(A)
- 60 < Lden ≤ 65 dB(A)
- 65 < Lden ≤ 70 dB(A)
- Lden > 70 dB(A)
- Eixos da Via em Estudo



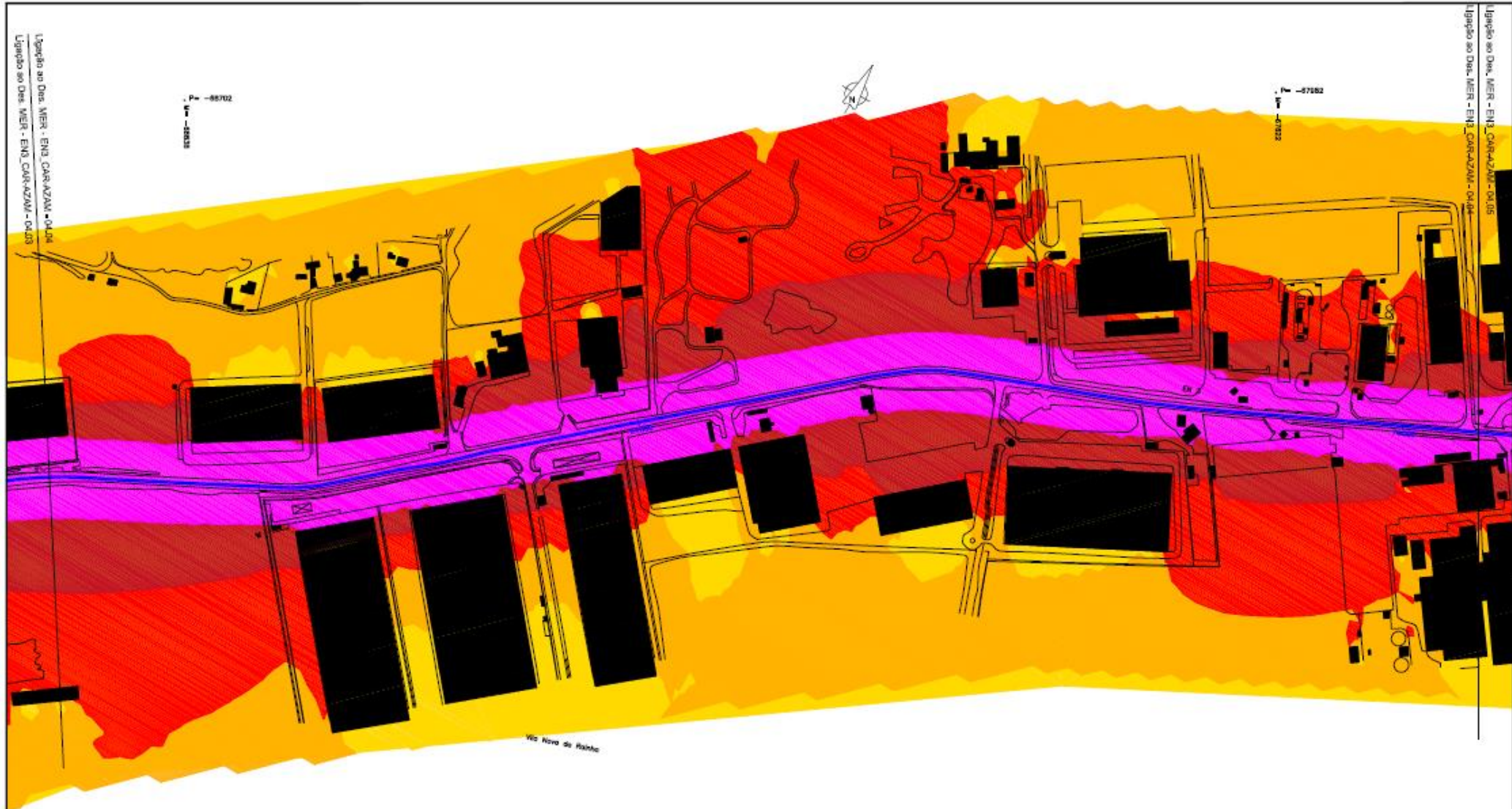
**LEGENDA**

- Lden ≤ 55 dB(A)
- 55 < Lden ≤ 60 dB(A)
- 60 < Lden ≤ 65 dB(A)
- 65 < Lden ≤ 70 dB(A)
- Lden > 70 dB(A)
- Eixos de Via em Estudo



**LEGENDA**

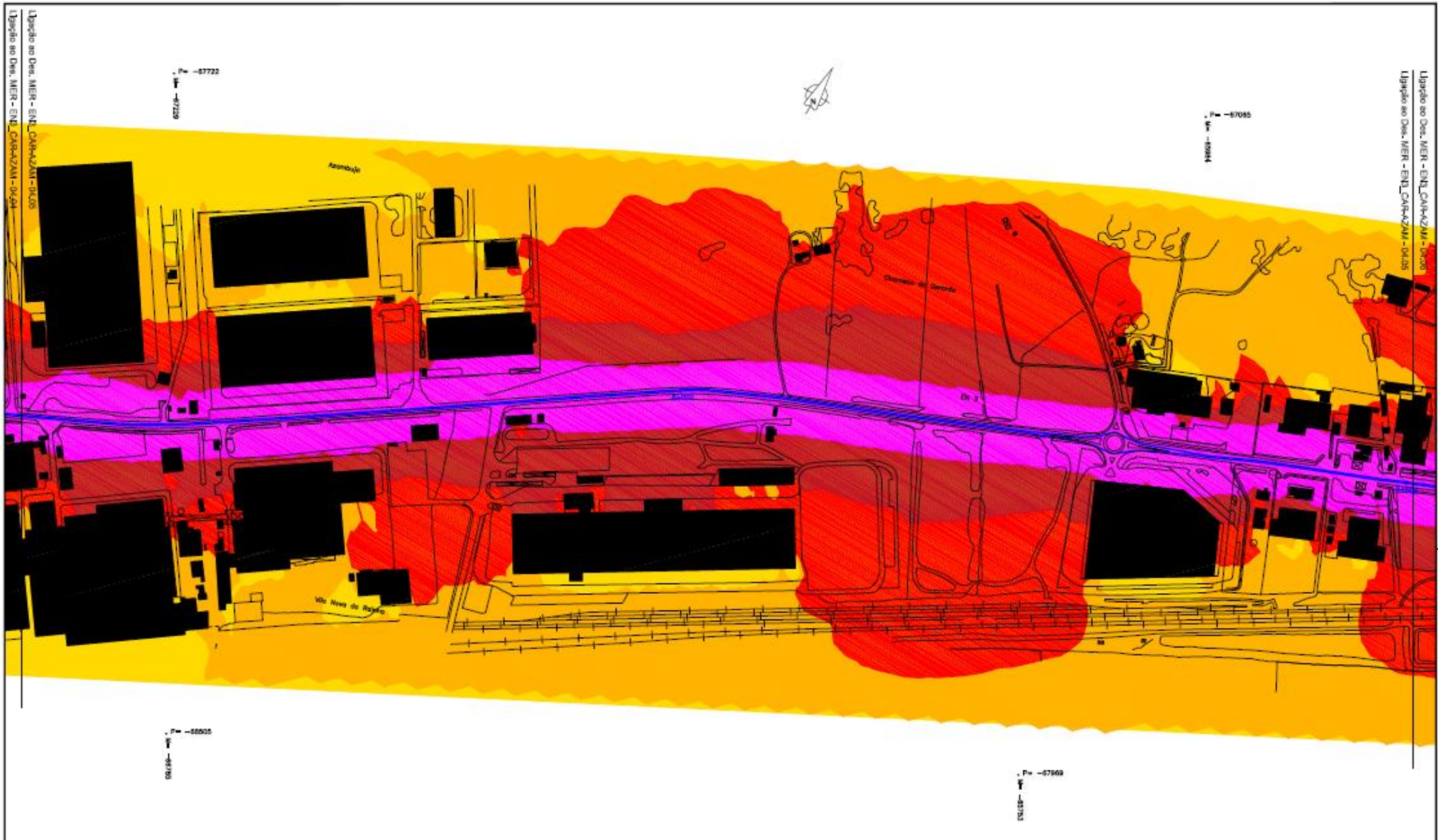
- Lden ≤ 55 dB(A)
- 55 < Lden ≤ 60 dB(A)
- 60 < Lden ≤ 65 dB(A)
- 65 < Lden ≤ 70 dB(A)
- Lden > 70 dB(A)
- Elcos de Via em Estudo



Via Nova de Fátima

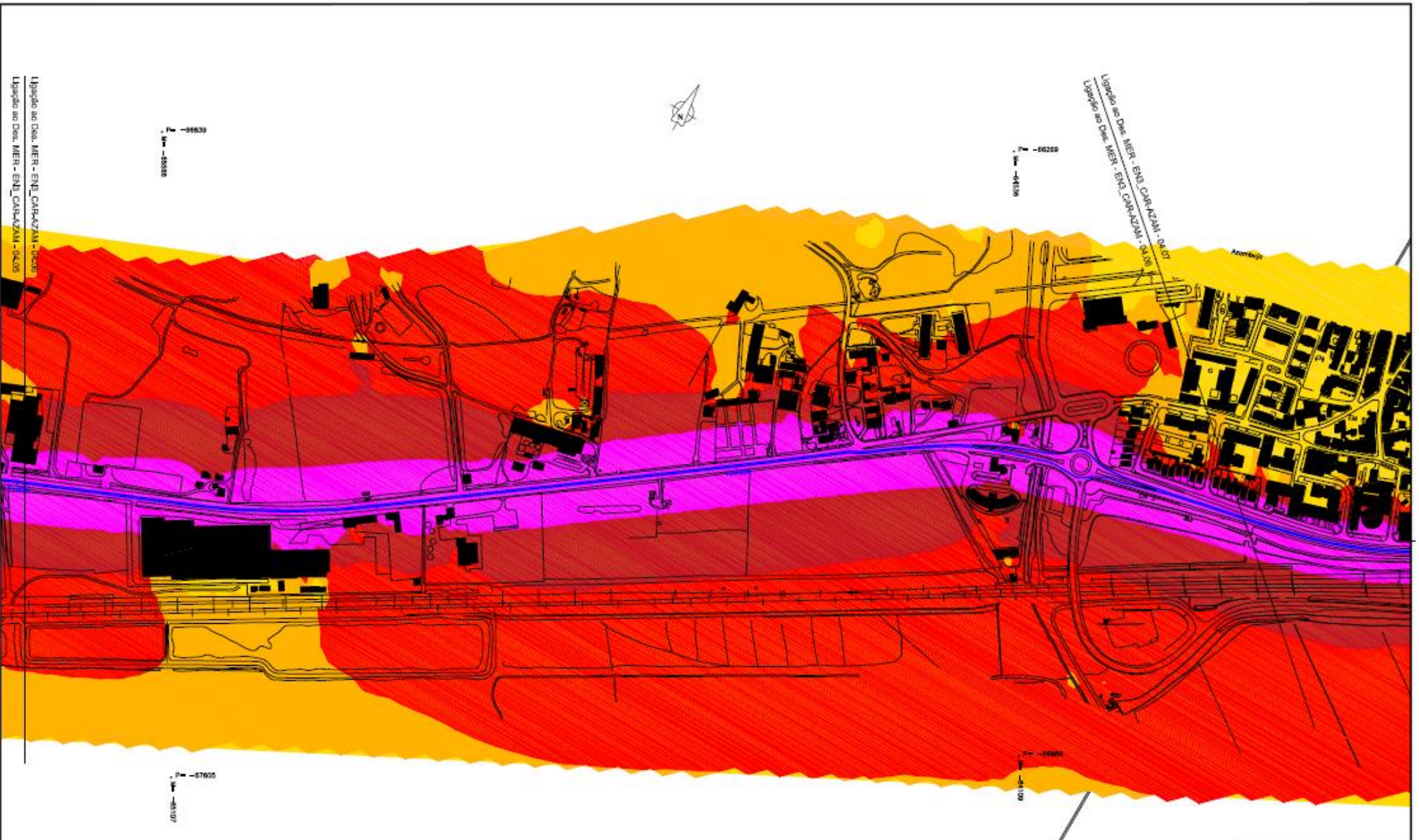
**LEGENDA**

	Lden ≤ 55 dB(A)
	55 < Lden ≤ 60 dB(A)
	60 < Lden ≤ 65 dB(A)
	65 < Lden ≤ 70 dB(A)
	Lden > 70 dB(A)
	Eixos da Via em Estudo



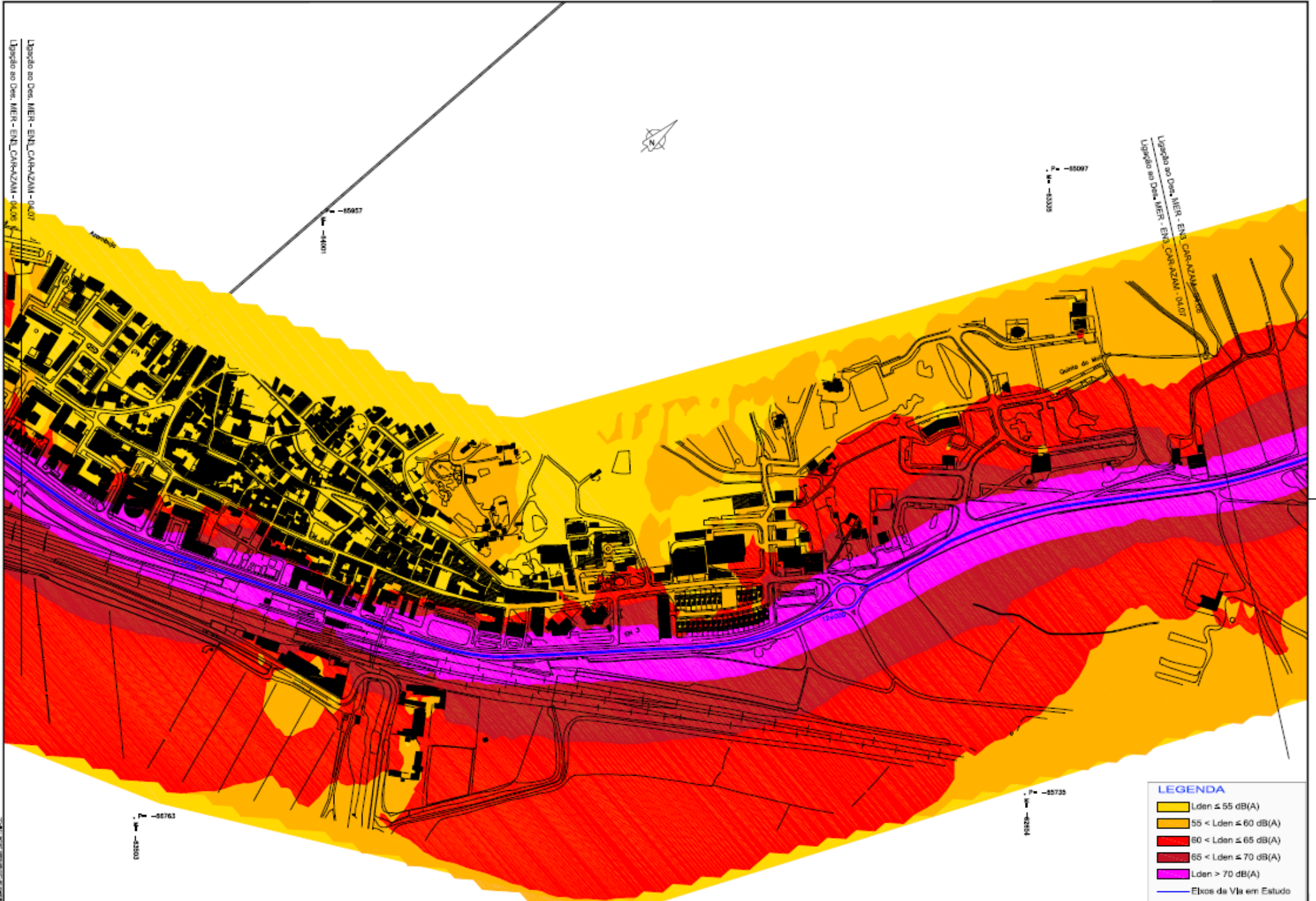
**LEGENDA**

<span style="background-color: yellow; border: 1px solid black; display: inline-block; width: 15px; height: 10px;"></span>	Lden ≤ 55 dB(A)
<span style="background-color: orange; border: 1px solid black; display: inline-block; width: 15px; height: 10px;"></span>	55 < Lden ≤ 60 dB(A)
<span style="background-color: red; border: 1px solid black; display: inline-block; width: 15px; height: 10px;"></span>	60 < Lden ≤ 65 dB(A)
<span style="background-color: darkred; border: 1px solid black; display: inline-block; width: 15px; height: 10px;"></span>	65 < Lden ≤ 70 dB(A)
<span style="background-color: magenta; border: 1px solid black; display: inline-block; width: 15px; height: 10px;"></span>	Lden > 70 dB(A)
<span style="border-bottom: 2px solid blue; display: inline-block; width: 20px;"></span>	Elxos da Via em Estudo



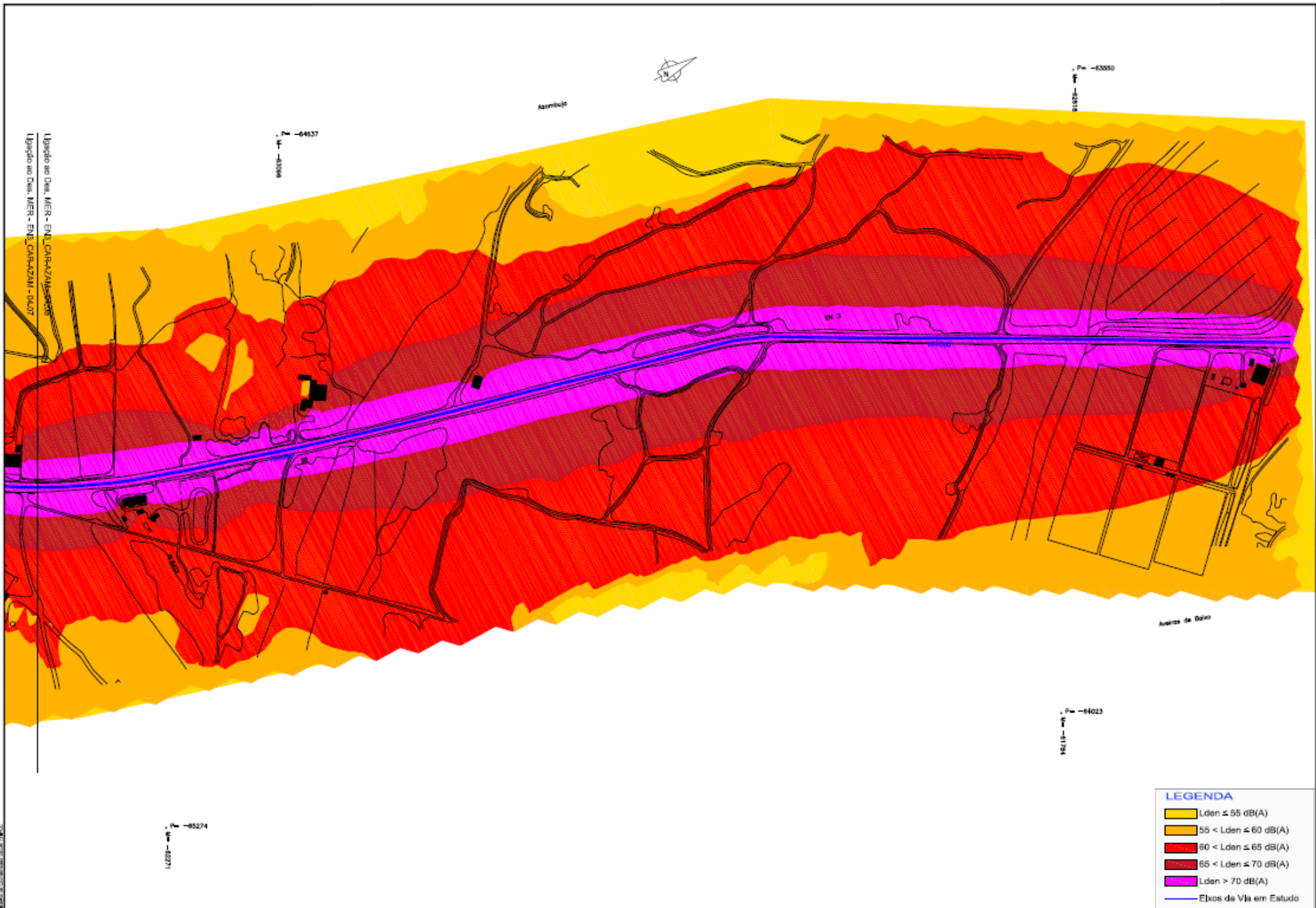
**LEGENDA**

	Lden ≤ 55 dB(A)
	55 < Lden ≤ 60 dB(A)
	60 < Lden ≤ 65 dB(A)
	65 < Lden ≤ 70 dB(A)
	Lden > 70 dB(A)
	Eixos de Via em Estudo



**LEGENDA**

- Lden ≤ 55 dB(A)
- 55 < Lden ≤ 60 dB(A)
- 60 < Lden ≤ 65 dB(A)
- 65 < Lden ≤ 70 dB(A)
- Lden > 70 dB(A)
- Elcos da Via em Estudo



Ligação ao Dns. MER - EN3 CARAVANZAM - 04/07  
 Ligação ao Dns. MER - EN3 CARAVANZAM - 04/07

LEGENDA	
<span style="display:inline-block; width:15px; height:10px; background-color:yellow; border:1px solid black;"></span>	Lden ≤ 55 dB(A)
<span style="display:inline-block; width:15px; height:10px; background-color:orange; border:1px solid black;"></span>	55 < Lden ≤ 60 dB(A)
<span style="display:inline-block; width:15px; height:10px; background-color:red; border:1px solid black;"></span>	60 < Lden ≤ 65 dB(A)
<span style="display:inline-block; width:15px; height:10px; background-color:darkred; border:1px solid black;"></span>	65 < Lden ≤ 70 dB(A)
<span style="display:inline-block; width:15px; height:10px; background-color:magenta; border:1px solid black;"></span>	Lden > 70 dB(A)
<span style="display:inline-block; width:15px; height:10px; background-color:blue; border:1px solid black;"></span>	Eixos de Via em Estudo